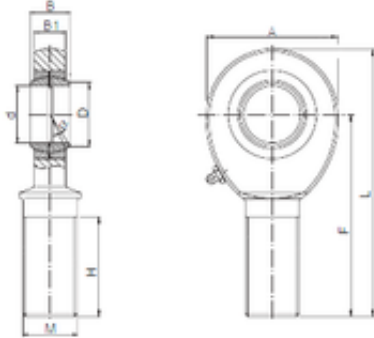




KIA Roller Industry Co.,Ltd

ISO SAL 20 plain bearings



Bearing No. SAL 20

Bore Diameter	20 mm
d	20 mm
B	25 mm
A	50 mm
B1	18 mm
D	24,3 mm
F	78 mm
H	47 mm
L	103 mm
Bolt (G)	M20x1,5

SAL 20 Bearing 2D drawings and 3D CAD models